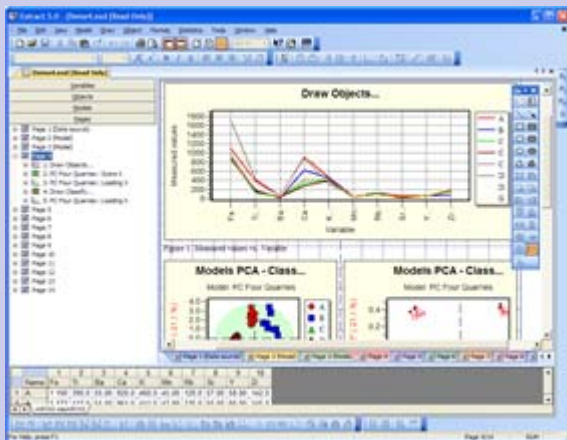


Extract 5.0 - state of the art software for your data analysis

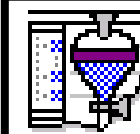
- **Extract** is easy to work with - there are many features simplifying your work and assisting you in the selection of data for your models. Extract is structured as a drawing program with a well-designed handling of diagrams, the central tool for visualizing your data and models.
- **Extract** is designed to help visualize the structure and quantitative relationships in your data. To model your data the multivariate methods Principal Component Analysis and Partial Least Squares can be used.
- **Extract** lets you to create a document that holds a link to your data file and contains the models and diagrams you have created. You can save your work at anytime and later reopen the document to continue your analysis.
- **Extract** lets you view and handle your data in three different views - the navigation view, the draw view and the data view.



Extract Information AB

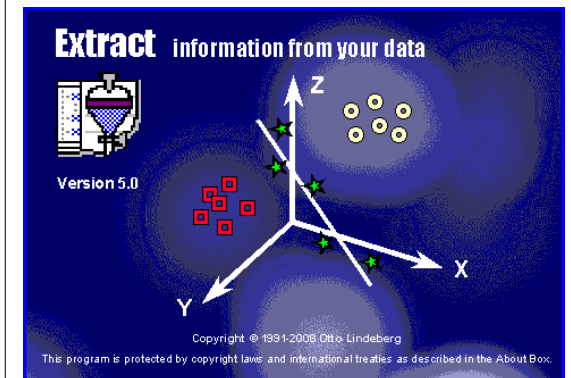
Garvaregatan 24A
602 21 Norrköping
SWEDEN

Phone: +46 (0)70-676 11 85
Fax: +46 (0)11-12 08 82
Email: info@extractinformation.com
Web: <http://www.extractinformation.com>



Extract information from your data.

Extract 5.0



Extract Information AB

Tel: +46 (0)70-676 11 85

Features

Multivariate modelling

- PCA - Principal Component Analysis
- PLS - Partial Least Squares
- Scores and loadings and other model parameters, including R2 and Q2, can be presented in diagrams in a number of ways.
- Reveal the class structure by color coding points from characters in object names.
- Predicted values, residuals and PRESS from PLS models can be plotted and listed.
- Missing values are handled in all calculations.
- Extract keeps track of objects and variables in the models, which simplifies the use of modeling and validation data sets.

Global parameters for calculations can be set in dialogs and are saved on exit from the program.

Variable and object selection

Variables and objects are selected from list controls in dialogs.

- To aid the selection a number of Quick Select options buttons are available.
- You can set the group size in your data if you e.g. have run duplicate or triplicate samples.
- To split your data in a modeling and a validation set spanning the variation in a Y variable is simple; just sort the data according to the Y variable, select every fourth (or whatever you desire) object for the validation set and use the rest for modeling - there is no need to create new data files to use subgroups in your data.
- You can refine the selection by excluding objects and variables from the action of the Quick Select option buttons, a feature simplifying fast data selection even more.
- You can select objects and variables graphically in diagrams - just click on them with the mouse - or you can circle objects you want to select or mark variable regions in a spectrum or pull up a maxi-

mum distance in a class distance diagram.

- If a diagram is selected when a dialog for object or variable selection is displayed, objects or variables in the diagram are preselected in the dialog.

Page layout and drawing

- Page layout for diagrams is controlled from a dialog. A diagram legend can be added automatically.
- Diagrams and diagram legends are renumbered automatically when a diagram is added or deleted.
- Unhide data points in diagrams by zooming with the mouse.
- Add other drawing objects to your diagram to enhance the appearance or focus the attention.
- The explorer view simplifies navigation between pages, diagrams and other draw objects.
- Create diagrams by dragging variables and dropping them in the document.
- New and default attributes for all draw objects are easily saved and applied.
- You can add clip-art to enhance your documents.
- All objects can be moved and sized with the mouse.
- Double-click on draw objects or diagram items like axes to edit them.

Miscellaneous

- Color and symbol code points from characters in object or variable names or any variable.
- Tooltips are available for diagram items.
- Frequently used commands are available from toolbar buttons.
- Regression lines are very easily added to datasets - select the dataset and click a button.
- Frequency histograms can be shown in diagrams.
- Descriptive statistics can be calculated and reported to a result document.
- A size and scaling factor can be set for the clipboard - simplifies copying and pasting diagrams into other documents like reports or presentation programs.

Printing

When you print your document you can choose between a number of formats:

- Full pages
- Diagrams (1 diagram per page)
- Handouts (2 diagrams per page)
- Handouts (3 diagrams per page)
- Handouts (3 small diagrams per page)

- Handouts (6 diagrams per page)

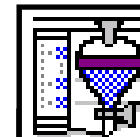
This feature extends the use of your diagrams - just select the output format when you print. There is no need to redo the diagram to create e.g. an overhead transparency. Scaling for each printout format can be set in a dialog and saved as default formats.

Data file formats

- Extract's own format
- Excel 2.1 - 5.0, Excel95, Excel97 and Excel 2000 files
- Tab-separated ASCII
- DIF
- Matlab 6
- Technicon InfraAlyzer
- LT Industries SpectraMetric
- Perstorps Analytical NIR Systems files
- Bruker Opus data files
- Unscrambler 2.1
- Access

To use a data file, you just open it - Extract will find out the type of file. There is no need to convert your data to special formats. You can also transpose your data if your data editor can't handle wide tables with data.

You can edit and merge data files and save your data in different formats.



Extract Information AB

Garvaregatan 24A
602 21 Norrköping
SWEDEN

Phone: +46 (0)70-676 11 85
Fax: +46 (0)11-12 08 82

Email: info@extractinformation.com
Web: <http://www.extractinformation.com>